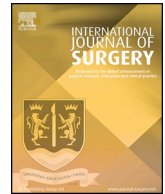




Since January 2020 Elsevier has created a COVID-19 resource centre with free information in English and Mandarin on the novel coronavirus COVID-19. The COVID-19 resource centre is hosted on Elsevier Connect, the company's public news and information website.

Elsevier hereby grants permission to make all its COVID-19-related research that is available on the COVID-19 resource centre - including this research content - immediately available in PubMed Central and other publicly funded repositories, such as the WHO COVID database with rights for unrestricted research re-use and analyses in any form or by any means with acknowledgement of the original source. These permissions are granted for free by Elsevier for as long as the COVID-19 resource centre remains active.



Review

World Health Organization declares global emergency: A review of the 2019 novel coronavirus (COVID-19)

Catrin Sohrabi^{a,1}, Zaid Alsafi^{b,1}, Niamh O'Neill^{a,*}, Mehdi Khan^b, Ahmed Kerwan^c,
Ahmed Al-Jabir^c, Christos Iosifidis^a, Riaz Agha^d

^a Barts and The London School of Medicine and Dentistry, Queen Mary University of London, United Kingdom

^b UCL Medical School, University College London, United Kingdom

^c GKT School of Medical Education, King's College London, United Kingdom

^d Barts Health NHS Trust, London, United Kingdom

ARTICLE INFO

Keywords:

Novel coronavirus
Wuhan
Viral transmission
Global health emergency
COVID-19

ABSTRACT

An unprecedented outbreak of pneumonia of unknown aetiology in Wuhan City, Hubei province in China emerged in December 2019. A novel coronavirus was identified as the causative agent and was subsequently termed COVID-19 by the World Health Organization (WHO). Considered a relative of severe acute respiratory syndrome (SARS) and Middle East respiratory syndrome (MERS), COVID-19 is caused by a betacoronavirus named SARS-CoV-2 that affects the lower respiratory tract and manifests as pneumonia in humans. Despite rigorous global containment and quarantine efforts, the incidence of COVID-19 continues to rise, with 90,870 laboratory-confirmed cases and over 3,000 deaths worldwide. In response to this global outbreak, we summarise the current state of knowledge surrounding COVID-19.

1. Introduction

On 31st December 2019, 27 cases of pneumonia of unknown aetiology were identified in Wuhan City, Hubei province in China [1]. Wuhan is the most populous city in central China with a population exceeding 11 million. These patients most notably presented with clinical symptoms of dry cough, dyspnea, fever, and bilateral lung infiltrates on imaging. Cases were all linked to Wuhan's Huanan Seafood Wholesale Market, which trades in fish and a variety of live animal species including poultry, bats, marmots, and snakes [1]. The causative agent was identified from throat swab samples conducted by the Chinese Centre for Disease Control and Prevention (CCDC) on 7th January 2020, and was subsequently named Severe Acute Respiratory Syndrome Coronavirus 2 (SARS-CoV-2). The disease was named COVID-19 by the World Health Organization (WHO) [2].

To date, most SARS-CoV-2 infected patients have developed mild symptoms such as dry cough, sore throat, and fever. The majority of cases have spontaneously resolved. However, some have developed various fatal complications including organ failure, septic shock, pulmonary oedema, severe pneumonia, and Acute Respiratory Distress Syndrome (ARDS) [3]. 54.3% of those infected with SARS-CoV-2 are male with a median age of 56 years. Notably, patients who required

intensive care support were older and had multiple comorbidities including cardiovascular, cerebrovascular, endocrine, digestive, and respiratory disease. Those in intensive care were also more likely to report dyspnoea, dizziness, abdominal pain, and anorexia [4].

1.1. WHO global health emergency

On 30th January 2020, the WHO declared the Chinese outbreak of COVID-19 to be a Public Health Emergency of International Concern posing a high risk to countries with vulnerable health systems. The emergency committee have stated that the spread of COVID-19 may be interrupted by early detection, isolation, prompt treatment, and the implementation of a robust system to trace contacts [5]. Other strategic objectives include a means of ascertaining clinical severity, the extent of transmission, and optimising treatment options. A key goal is to minimise the economic impact of the virus and to counter misinformation on a global scale [5]. In light of this, various bodies have committed to making articles pertaining to COVID-19 immediately available via open access to support a unified global response [6].

* Corresponding author.

E-mail address: niamh@ijssu.com (N. O'Neill).

¹ CS and ZA contributed equally to the preparation of this manuscript.

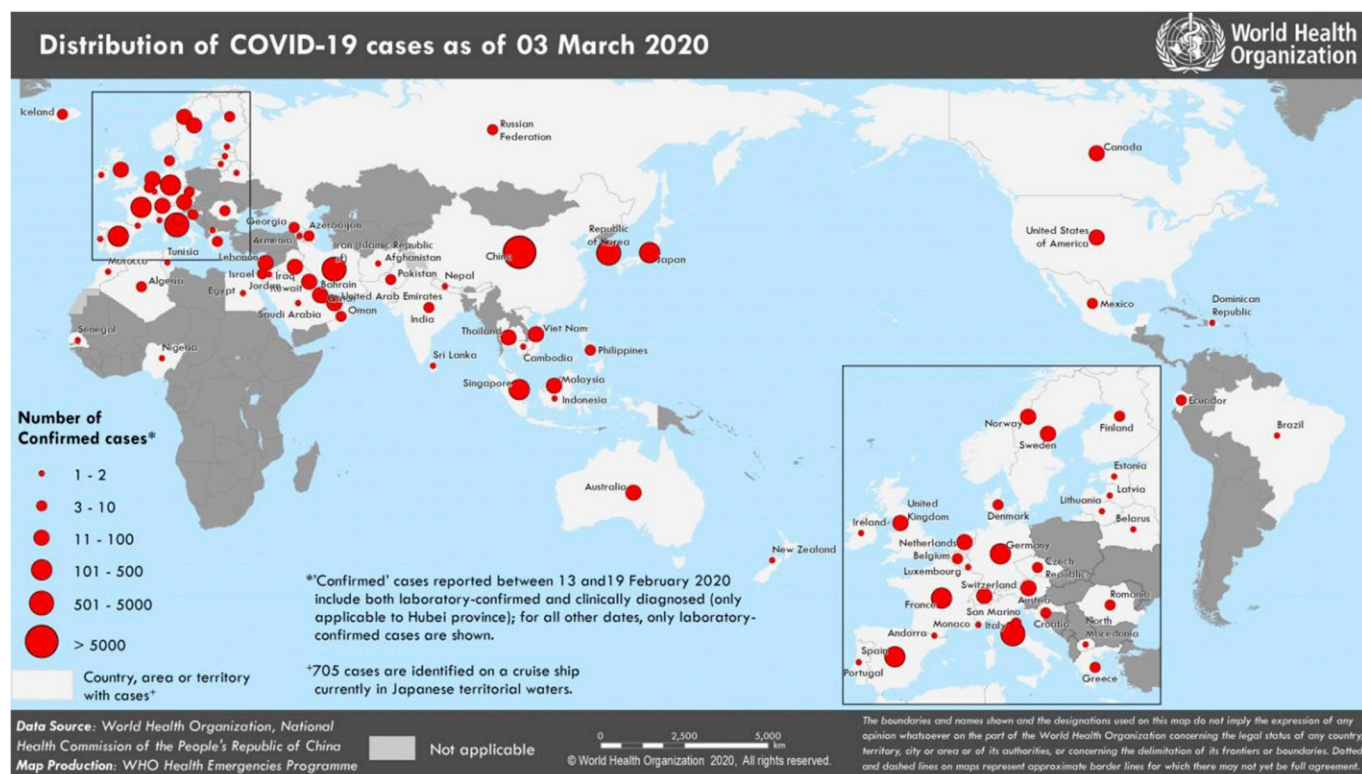


Fig. 1. Illustration of the geographical spread of confirmed COVID-19. Data accurate as of 3rd March 2020 [23].

1.2. Global response

Efforts aimed at deciphering the pathophysiology of COVID-19 have led to the EU mobilising a €10,000,000 research fund to “contribute to more efficient clinical management of patients infected with the virus, as well as public health preparedness and response” [7]. Regarding diagnostic testing, US-based companies such as Co-Diagnostics and the Novacyt’s molecular diagnostics division Primerdesign have launched COVID-2019 testing kits for use in the research setting [8,9]. The United Kingdom (UK) government have also invested £20,000,000 to help develop a COVID-19 vaccine [10]. Additionally, the United States (US) have suspended all entry of immigrants and non-immigrants having travelled to high-risk zones with the intention of halting further viral spread [11]. Hong Kong has also suspended several public transport services across the border and many hospital workers and civil servants are currently on strike. Strikers are demanding that the border to mainland China be closed completely to prevent further COVID-19 transmission. However, Hong Kong authorities have resisted these requests, stating that “closing the border would go against advice from the WHO” [12]. In addition, growing fears regarding China’s economy has led the Chinese central bank to invest ¥150 billion to support the stability of the currency market [13].

1.3. Confirmed UK cases and British response

As of 4th March 2020, a total of 16,659 tests for COVID-19 have been conducted across the UK. To date, 85 individuals have tested positive resulting in the UK public health risk for viral infection being raised from low to moderate [14]. To prevent transmission, the UK government are following direct guidelines from the Department of Health (DoH) for encountering overseas travellers with respiratory infections, particularly for those who have travelled to Wuhan [15–17]. The UK National Health Service (NHS) have stressed the importance of using Personal Protective Equipment (PPE), taking a thorough travel history, and escalating suspected cases immediately with a view to

isolating patients. Any detected cases of COVID-19 should be transferred to an Airborne High Consequence Infectious Diseases (HCID) centre, including the two principal centres in England (the Royal Free Hospital in London and the Newcastle Royal Victoria Infirmary).

The DoH and UK Chief Medical Officers have also advised individuals having visited Wuhan and the Hubei Province in the last 14 days to remain indoors and to call NHS 111. This advice also applies to individuals having visited mainland China, Thailand, Japan, Republic of Korea, Hong Kong, Taiwan, Singapore, Malaysia, and Macau. The British Foreign and Commonwealth Office have advised British citizens to avoid all travels to the Hubei Province, and to avoid unnecessary travel to Mainland China [18]. More recently, 200 British citizens were quarantined following an evacuation flight from Wuhan on the 30 January 2020. All other flights arriving to the UK from Hubei Province have since been suspended [19]. However, in keeping with WHO recommendations, no travel restrictions have been placed on individuals having travelled to China within the last two weeks and are free to enter the UK.

1.4. Viral transmission and spread

There are currently few studies that define the pathophysiological characteristics of COVID-19, and there is great uncertainty regarding its mechanism of spread. Current knowledge is largely derived from similar coronaviruses, which are transmitted from human-to-human through respiratory fomites [20]. Typically, respiratory viruses are most contagious when a patient is symptomatic. However, there is an increasing body of evidence to suggest that human-to-human transmission may be occurring during the asymptomatic incubation period of COVID-19, which has been estimated to be between 2 and 10 days [20–22].

As of 3rd March 2020, 90,870 cases of COVID-19 have been confirmed, 80,304 of which are confined to China. Of the Chinese cases, 67,217 were confirmed in the Hubei Province with the remainder being reported in 34 provinces, regions and cities in China (Fig. 1) [23]. The

remaining 10,566 cases were identified in 72 countries including Japan, the US, and Australia. 166 of these cases were fatal (the Philippines, Japan, Korea, Italy, France, Iran, Australia, Thailand, and the US). It is important to note that these figures are likely to be an underestimate, since the data presented depicts laboratory-confirmed diagnoses only.

1.5. Prevention

Various bodies including the WHO and US Centers for Disease Control and Prevention (CDC) have issued advice on preventing further spread of COVID-19 [20,24]. They recommend avoiding travel to high-risk areas, contact with individuals who are symptomatic, and the consumption of meat from regions with known COVID-19 outbreak. Basic hand hygiene measures are also recommended, including frequent hand washing and the use of PPE such as face masks. Japanese-based company Bespoke Inc has also launched an artificial intelligence-powered chatbot (Bebot) that provides up-to-date information regarding the coronavirus outbreak, preventative measures that can be taken, as well as a symptom checker [25].

1.6. Diagnosis

Clinical features of COVID-19 include dry cough, fever, diarrhoea, vomiting, and myalgia. Individuals with multiple comorbidities are prone to severe infection and may also present with acute kidney injury (AKI) and features of ARDS [3,26]. The WHO and CDC have both issued guidance on key clinical and epidemiological findings suggestive of a COVID-19 infection (Table 1) [27]. Extensive laboratory tests should be requested for patients with suspected infection. Patients may present with an elevated C-reactive protein, erythrocyte sedimentation rate, lactate dehydrogenase, creatinine, and a prolonged prothrombin time [4].

Full genome sequencing and phylogenetic analysis on fluid from bronchoalveolar lavage can confirm COVID-2019 infection [29]. Investigations for other respiratory pathogens should also be performed.

1.7. Treatment

At present, no effective antiviral treatment or vaccine is available for COVID-19. However, a randomized multicentre controlled clinical trial is currently underway to assess the efficacy and safety of abidole in patients with COVID-19 (ChiCTR2000029573). First-line treatment for fevers include antipyretic therapy such as paracetamol, whilst expectorants such as guaifenesin may be used for a non-productive cough [4]. Patients with severe acute respiratory infection, respiratory distress, hypoxaemia or shock require the administration of immediate oxygen therapy. This should be at 5 L/min to reach SpO₂ targets of ≥ 90% in non-pregnant adults and children, and ≥ 92–95% in pregnant

women [30–32]. In the absence of shock, intravenous fluids should be carefully administered [33]. Renal replacement therapy (RRT) should be initiated for patients with an AKI. Renal function and fluid balance should be used to identify patients that may require RRT [4]. Broad spectrum antibiotic therapy should also be administered within 1 hour of initial assessment for sepsis [34]. It is important to note that patients can develop further bacterial and fungal infections during the middle and latter stages of the disease. Therefore, conservative and rational antibiotic regimens must still be followed [35].

The National Health Commission of the People's Republic of China recommends the use of IFN-α and lopinavir/ritonavir. This advice is based on prior research showing that these medications lower mortality rates in patients infected with Severe Acute Respiratory Syndrome (SARS) [36]. Oseltamivir, a neuraminidase inhibitor, is currently being used by medical staff in China for suspected infections despite the lack of any conclusive evidence regarding its effectiveness on COVID-19. Glucocorticoids may also be considered for patients with severe immune reactions. In children, methylprednisolone should be limited to 1–2 mg/kg/day for a maximum of 5 days [4,35].

1.8. Prognosis

As of 3rd March 2020, a total of 3,112 deaths have been reported worldwide. Outside of China, 166 of these deaths have been reported in the Philippines, Japan, Korea, Italy, France, Iran, Australia, Thailand, and the US [23]. However, the number of positive cases and deaths continues to rise. The current reported mortality for COVID-19 is approximately 3.4% compared with 9.6% for SARS [37] and 34.4% for Middle East respiratory syndrome (MERS) [38]. The clinical features of COVID-19 versus its distance relative SARS are summarised in Table 2. To date, COVID-19 has been shown to have a mean incubation period of 5.2 days and a median duration from the onset of symptoms to death of 14 days [22,39], which is comparable to that of MERS [40]. Patients ≥ 70 years of age have a shorter median duration (from the onset of initial symptoms to death) of 11.5 days, highlighting the vulnerability of this particular patient cohort.

1.9. Methods of containment

The epicentre in Wuhan is comprised of an urban area spanning 1,528 km² and exceeds 11 million residents. This area was quarantined on 23rd January 2020. Subsequent viral spread led to the imposition of a cordon sanitaire, restricting movement across Hubei Province in 16 cities, affecting 50 million people [42]. All forms of public transportation including long-distance bus routes, metros, express railways, and aviation were uncompromisingly sealed off – a process facilitated by China's mega city-region infrastructure [43]. In addition, Chinese New

Table 1
A comparison of CDC versus WHO diagnostic criteria based on symptoms and travel [20,28].

	CDC	WHO
Clinical features	Fever Lower respiratory tract infection (possibly requiring hospitalization)	Acute respiratory infection (ARI) Fever or measured temperature ≥ 38C° Cough Onset within the last ~10 days Requires hospitalization
Epidemiological Risk	History of travel from Hubei Province History of travel from mainland China Close contact with laboratory-confirmed COVID-19 patients within 14 days of symptom onset	History of travel from Hubei Province Healthcare workers who have worked in an environment where patients with ARI are being cared for Unexpected clinical course follows despite treatment, including rapid deterioration Close contact (within 2 meters for over 15 minutes) with confirmed SARS-CoV-2 infection Present in healthcare facilities and hospitals in countries where COVID-19 has been reported All of the above occurring within 14 days prior to symptom onset

Table 2

A tabular comparison of SARS versus COVID-19. Data accurate as of 3rd March 2020 [20,23,41].

	SARS	COVID-19
Clinical presentation	Fever Dry cough Shortness of breath	Fever Cough Shortness of breath
Incubation period	2–7 days	2–14 days
Number infected globally	8096	90,870
Deaths globally	774	3,112
Mortality	9.6%	3.4%

Year celebrations were subdued amid an unprecedented national lockdown to prevent the amplification of viral spread [44]. Despite the implementation of restrictions on trade and trading routes representing an effective method of curbing viral spread [45], WHO recommendations continue to advise against the enforcement of restrictions to travel and trade [46].

To halt further viral spread, a ¥1 billion fund from China's Finance Ministry was used to facilitate the construction of two new hospitals in under two weeks in Wuhan [47]. Outside of China, aviation restrictions are being employed. In Europe, the Czech Republic, Greece, and Italy have recently suspended visa issuance and all air traffic from mainland China [48]. US airlines have also suspended flights until early spring [49]. Local exit screening conducted by healthcare professionals at airports is currently recommended by WHO [46], and multiple countries (Australia, Thailand, South Korea, Japan, India, Italy, and Singapore) have initiated temperature and symptom screening protocols [50]. Several countries (UK, US, and Australia) are also quarantining citizens having recently been evacuated from Wuhan [51–53]. Notably, significant concerns are currently focused towards Africa which may be least prepared should an outbreak ensue [46]. Evidently, an exponential increase in case count may dampen concerted containment efforts.

1.10. COVID-19 pathophysiology

COVID-19 is caused by SARS-CoV-2, a betacoronavirus. It is comprised of a single-stranded ribonucleic acid (RNA) structure that belongs to the *Coronavirinae* subfamily, part of the *Coronaviridae* family. Sequence analysis of SARS-CoV-2 has shown a structure typical to that of other coronaviruses (Fig. 2), and its genome has been likened to a previously identified coronavirus strain that caused the SARS outbreak in 2003 [54]. Structurally, the SARS coronavirus (SARS-CoV) has a well-defined composition comprising 14 binding residues that directly interact with human angiotensin-converting enzyme 2. Of these amino acids, 8 have been conserved in SARS-CoV-2 [55]. In humans, coronaviruses were thought to cause mild respiratory infections until the identification of SARS-CoV and MERS coronavirus (MERS-CoV). Although the exact pathophysiological mechanisms underlying the emergence of SARS-CoV-2 are unknown (due to pending laboratory trials), genomic similarities to SARS-CoV could help to explain the resulting inflammatory response that may lead to the onset of severe pneumonia [55]. Until these laboratory trials are initiated, the precise mechanism of SARS-CoV-2 remains hypothetical.

1.11. The wider consequences of COVID-19

China is integral to nearly every sector of the global economy. As the world's most populous nation, China has already battled with viral epidemics, including the outbreak of SARS in 2003. At the time, however, China's gross domestic production was 4% of the global total – it is now 17% [57]. The recent outbreak of the COVID-19 has already challenged an economy strained by trade wars with the US; national growth hit a 30-year low in 2019 [58]. Provinces responsible for over 90% of Chinese exports have since ordered their factories to stay closed or to run at low

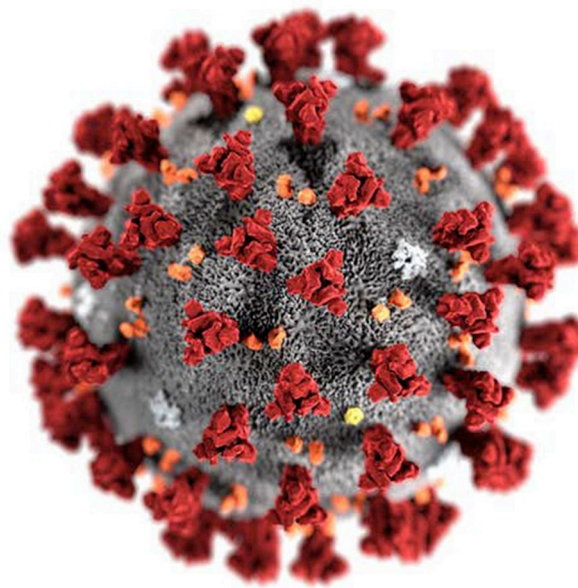


Fig. 2. Illustration of the SARS-CoV-2 virion [56].

capacity [59]. Moreover, China's position as the world's largest manufacturer [60] and importer of crude oil [61] has caused economists to nudge down their forecasts for full-year global growth. The key difference between COVID-19 and SARS however is the complexity of supply chains that China is now enmeshed in. There exists little historical evidence to provide guidance for the disruption of such supply chains as global reliance on them is a relatively new phenomenon.

1.12. Lessons learned from the COVID-19 outbreak

The international response to COVID-19 has been more transparent and efficient when compared to the SARS outbreak. However, several learning points should be taken away from COVID-19 in the event of future outbreaks (Table 3). Of particular note, it has been suggested that the Chinese central government may have issued viral response guidelines 13 days before the public were informed [62]. This may have delayed the implementation of containment strategies that could have dampened viral spread such as reporting suspected cases in public and the work place.

2. Conclusion

The recent COVID-19 outbreak has been deemed a global health emergency. Internationally, the number of confirmed reports has continued to rise, and is currently placed at 90,870 laboratory-confirmed cases with over 3,000 deaths. It is perhaps clear that quarantine alone may not be sufficient to prevent the spread of COVID-19, and the global impact of this viral infection is one of heightening concern. Further research is undoubtedly required to help define the exact mechanism of human-to-human and animal-to-human transmission to facilitate the development of a virus-specific vaccine. Evidently, the pandemic potential of COVID-19 demands rigorous surveillance and on-going monitoring to accurately track and potentially predict its future host adaptation, evolution, transmissibility, and pathogenicity. These factors will ultimately influence mortality rates and prognosis. However, the rapidly evolving nature of the COVID-2019 epidemic, ever changing statistics, and constant unravelling of new research findings represents a major limitation to the present review. Nevertheless, as a surgical community, it is also our responsibility to be aware of the aforementioned signs and symptoms and to promptly escalate suspected cases.

Table 3

A tabular presentation of lessons to be learned from the response to COVID-19.

Issues with the current response	Event	Consequence	Key learning points
Lack of transparency	Intimidation of clinicians who initially identified COVID-19	Delay in the release of information pertaining to COVID-19 cases	Establish clear whistleblowing policies for possible global health emergencies
Travel restriction delay	Aviation services operated for over a month following the initial outbreak with minimal health screening at international borders	Citizens travelling from high-risk areas were able to freely pass through large airports without health screening	Precautions such as screening citizens returning from high-risk countries should be implemented earlier
Quarantine delay	On 31 st December 2019, the first report of COVID-19 was released. Wuhan began to quarantine on 23 rd January 2020, nearly a month later	Allowed individuals potentially infected with COVID-19 to spread the infection both nationally and internationally	Quarantine high-risk areas as soon as a possible health threat is identified
Public misinformation	Lack of transparency allows rumours, speculation and misinformation to be spread amongst the public	Racism, incorrect public precautions, and unprecedented fear surrounding COVID-19	Transparency and open access to all information is essential to avoid misinformation
Emergency announcement delay	Public Health Emergency of International Concern declared by WHO on 30 th December 2019, a month following the initial outbreak	The severity of the outbreak was not widely broadcasted or acknowledged. This may have delayed containment measures	Framework should be developed for fast-spreading diseases in order to escalate a threat status earlier
Research and development	Lack of funding in initial stages of research and development of vaccine and treatment of COVID-19	Over 3,000 patients worldwide have died due to COVID-19, and the death toll continues to rise weekly	Further investment is required to produce effective treatments and to establish robust methods to contain future outbreaks of communicable disease

Provenance and peer review

Not commissioned, externally peer-reviewed.

Data statement

The data in this review is not sensitive in nature and is accessible in the public domain. The data is therefore available and not of a confidential nature.

Ethical approval

No ethical approval required.

Sources of funding

No funding received.

Author contribution

CS, ZA, NO: Conceptualization, Data curation, Resources, Writing original draft, Editing drafts, Approval of final article. MK, AK, AA, CI, RA: Conceptualization, Data curation, Resources, Writing original draft, Approval of final article.

Research registration number

Not relevant.

Guarantor

Niamh O'Neill – Corresponding Author niamh@ijspg.com.
Riaz Agha – Senior Author mail@riazagha.com.

Declaration of competing interest

No conflicts of interest to declare.

References

- [1] H. Lu, C.W. Stratton, Y. Tang, Outbreak of pneumonia of unknown etiology in wuhan China: the mystery and the miracle, *J. Med. Virol.* (2020) 25678.
- [2] World Health Organization, WHO Director-General's Remarks at the Media Briefing on 2019-nCoV on 11 February 2020, (2020) <https://www.who.int/dg/speeches/detail/who-director-general-s-remarks-at-the-media-briefing-on-2019-ncov-on-11-february-2020>.
- [3] N. Chen, M. Zhou, X. Dong, et al., Epidemiological and clinical characteristics of 99 cases of 2019 novel coronavirus pneumonia in Wuhan, China: a descriptive study, *Lancet* (2020), [https://doi.org/10.1016/S0140-6736\(20\)30211-7](https://doi.org/10.1016/S0140-6736(20)30211-7).
- [4] D. Wang, B. Hu, C. Hu, et al., Clinical characteristics of 138 hospitalized patients with 2019 novel coronavirus-infected pneumonia in wuhan, China, *J. Am. Med. Assoc.* (2020), <https://doi.org/10.1001/jama.2020.1585>.
- [5] World Health Organization, Novel Coronavirus(2019-nCoV), Situation Report - 12 (2020).
- [6] Wellcome, Sharing Research Data and Findings Relevant to the Novel Coronavirus (nCoV) Outbreak, (2020).
- [7] European Commission, Coronavirus: EU Mobilises €10 Million for Research, (2020) https://ec.europa.eu/info/news/coronavirus-eu-mobilises-eur10-million-for-research-2020-jan-31_en.
- [8] Verdict Medical Devices, Co-Diagnostics Launches RUO Test for New Coronavirus, (2020) <https://www.medicaldevice-network.com/news/co-diagnostics-ruo-test/>.
- [9] Verdict Medical Devices, Primerdesign Launches Molecular Test for New Coronavirus, (2020) <https://www.medicaldevice-network.com/news/primerdesign-molecular-test-coronavirus/>.
- [10] BBC, Coronavirus: UK Donates £20m to Speed up Vaccine, (2020) <https://www.bbc.co.uk/news/health-51352952>.
- [11] The White House, Proclamation on Suspension of Entry as Immigrants and Nonimmigrants of Persons Who Pose a Risk of Transmitting 2019 Novel Coronavirus, (2020) <https://www.whitehouse.gov/presidential-actions/proclamation-suspension-entry-immigrants-nonimmigrants-persons-pose-risk-transmitting-2019-novel-coronavirus/>.
- [12] BBC, Coronavirus: Hong Kong Hospital Staff Strike to Demand Closure of China Border, (2020) <https://www.bbc.co.uk/news/world-asia-51349154>.
- [13] BBC, Coronavirus: China to Pump Billions into Economy amid Growth Fears, (2020) <https://www.bbc.co.uk/news/business-51347497>.
- [14] Public Health England, Coronavirus (COVID-19): Latest Information and Advice, (2020) <https://www.gov.uk/guidance/wuhan-novel-coronavirus-information-for-the-public#history>.
- [15] World Health Organization, Novel Coronavirus(2019-nCoV): Situation Report - 10, (2020) https://www.who.int/docs/default-source/coronaviruse/situation-reports/20200130-sitrep-10-ncov.pdf?sfvrsn=d0b2e480_2.
- [16] HM Government, Novel Coronavirus: Guidance for Primary Care, (2020) <https://www.gov.uk/government/publications/wn-cov-guidance-for-primary-care>.
- [17] HM Government, 2019-nCoV Acute Respiratory Disease: Guidance for Clinical Diagnostic Laboratories, (2020) <https://www.gov.uk/government/publications/wuhan-novel-coronavirus-guidance-for-clinical-diagnostic-laboratories>.
- [18] UK Foreign & Commonwealth Office, Travel Advice: Novel Coronavirus, (2020) <https://www.gov.uk/guidance/travel-advice-novel-coronavirus>.
- [19] BBC, Coronavirus: Britons on Wuhan Flights to Be Quarantined, (2020) <https://www.bbc.co.uk/news/uk-51292590>.
- [20] Centers for Disease Control and Prevention, 2019 Novel Coronavirus, (2020) <https://www.cdc.gov/coronavirus/2019-ncov/about/transmission.html>.
- [21] C. Rothe, M. Schunk, P. Sothmann, et al., Transmission of 2019-nCoV infection from an asymptomatic contact in Germany, *N. Engl. J. Med.* (2020) NEJMc2001468. Epub ahead of print.
- [22] Q. Li, X. Guan, P. Wu, et al., Early transmission dynamics in wuhan, China, of novel coronavirus-infected pneumonia, *N. Engl. J. Med.* (2020) NEJMoa2001316. Epub ahead of print.
- [23] World Health Organization, Coronavirus Disease 2019 (COVID-19) Situation Report

- 43, (2020).
- [24] World Health Organization, Novel Coronavirus (2019-nCoV) Advice for the Public, (2020) <https://www.who.int/emergencies/diseases/novel-coronavirus-2019/advice-for-public>.
- [25] Bespoke, Bebot Launches Free Coronavirus Information Bot, (2020) <https://www.be-spoke.io/index.html>.
- [26] C. Huang, Y. Wang, X. Li, et al., Clinical features of patients infected with 2019 novel coronavirus in Wuhan, China, *Lancet* 395 (2020) 497–506.
- [27] Elsevier, Novel Coronavirus Information Center, (2020) <https://www.elsevier.com/connect/coronavirus-information-center>.
- [28] World Health Organization, Clinical Management of Severe Acute Respiratory Infection when Novel Coronavirus (nCoV) Infection Is Suspected: Interim Guidance, (2020) <https://www.who.int/docs/default-source/coronaviruse/clinical-management-of-novel-cov.pdf>.
- [29] N. Zhu, D. Zhang, W. Wang, et al., A novel coronavirus from patients with pneumonia in China, 2019, *N. Engl. J. Med.* (2020) NEJMoa2001017. Epub ahead of print.
- [30] H. Røsjø, M. Varpula, T.-A. Hagve, S. Karlsson, E. Ruokonen, V. Pettilä, T. Omland, Circulating high sensitivity troponin T in severe sepsis and septic shock: distribution, associated factors, and relation to outcome, *Intensive Care Med.* 37 (2011) 77–85.
- [31] World Health Organization, Pocket Book of Hospital Care for Children: Guidelines for the Management of Common Childhood Illnesses, (2013).
- [32] World Health Organization, WHO Global Epidemiological Surveillance Standards for Influenza, (2014).
- [33] M.J. Schultz, M.W. Dunser, A.M. Dondorp, et al., Current challenges in the management of sepsis in ICUs in resource-poor settings and suggestions for the future, *Intensive Care Med.* 43 (2017) 612–624.
- [34] A. Rhodes, L.E. Evans, W. Alhazzani, et al., Surviving sepsis campaign: international guidelines for management of sepsis and septic shock, *Intensive Care Med.* 43 (2017) 304–377 2016.
- [35] L. Kui, Y.-Y. Fang, Y. Deng, et al., Clinical characteristics of novel coronavirus cases in tertiary hospitals in Hubei Province, *Chin. Med. J. (Engl)* 1 (2020).
- [36] C.M. Chu, Role of lopinavir/ritonavir in the treatment of SARS: initial virological and clinical findings, *Thorax* 59 (2004) 252–256.
- [37] World Health Organization, Summary of Probable SARS Cases with Onset of Illness from 1 November 2002 to 31, (2003) https://www.who.int/csr/sars/country/table2003_09_23/en/ July 2003.
- [38] World Health Organization, Middle East respiratory syndrome coronavirus (MERS-CoV), <https://www.who.int/emergencies/mers-cov/en/>, (2019).
- [39] W. Wang, J. Tang, F. Wei, Updated understanding of the outbreak of 2019 novel coronavirus (2019-nCoV) in Wuhan, China, *J. Med. Virol.* (2020) 25689.
- [40] M. Oh, W.B. Park, S.-W. Park, P.G. Choe, J.H. Bang, K.-H. Song, E.S. Kim, H. Bin Kim, N.J. Kim, Middle East respiratory syndrome: what we learned from the 2015 outbreak in the Republic of Korea, *Korean J. Intern. Med.* 33 (2018) 233–246.
- [41] D.S.-C. Hui, P.-C. Wong, C. Wang, SARS: clinical features and diagnosis, *Respirology* 8 (2003) S20–S24.
- [42] The Washington Post, Chinese Coronavirus Infections, Death Toll Soar as Fifth Case Is Confirmed in U.S, (2020) https://www.washingtonpost.com/gdpr-consent/?destination=%2Fworld%2Fasia_pacific%2Fcoronavirus-china-latest-updates%2F2020%2F01%2F26%2F4603266c-3fa8-11ea-afe2-090eb37b60b1_story.html%3F.
- [43] The Guardian, Hong Kong Cuts China Transport Links as Coronavirus Toll Mounts, (2020) <https://www.theguardian.com/science/2020/jan/28/wuhan-evacuation-us-and-japan-to-fly-out-citizens-as-coronavirus-deaths-rise>.
- [44] The New York Times, Coronavirus in New York: Lunar New Year Events Canceled over Fears, (2020) <https://www.nytimes.com/2020/01/29/nyregion/coronavirus-nyc.html>.
- [45] N. Madhav, B. Oppenheim, M. Gallivan, P. Mulebakani, E. Rubin, N. Wolfe, Pandemics: risks, impacts, and mitigation, *Dis. Control Priorities Improv. Heal. Reducing Poverty* (2017), <https://doi.org/10.1596/978-1-4648-0527-1/pt5.ch17>.
- [46] World Health Organization, Statement on the Second Meeting of the International Health Regulations (2005) Emergency Committee Regarding the Outbreak of Novel Coronavirus (2019-nCoV), (2020) [https://www.who.int/news-room/detail/30-01-2020-statement-on-the-second-meeting-of-the-international-health-regulations-\(2005\)-emergency-committee-regarding-the-outbreak-of-novel-coronavirus-\(2019-ncov\)](https://www.who.int/news-room/detail/30-01-2020-statement-on-the-second-meeting-of-the-international-health-regulations-(2005)-emergency-committee-regarding-the-outbreak-of-novel-coronavirus-(2019-ncov)).
- [47] The Guardian, New 1,000-bed Wuhan Hospital Takes its First Coronavirus Patients, (2020) <https://www.theguardian.com/world/2020/feb/04/new-1000-bed-wuhan-hospital-takes-its-first-coronavirus-patients>.
- [48] Shengen Visa Info, Italy Suspends Visa Issuance and All Air Traffic from China, (2020) <https://www.schengenvisainfo.com/news/italy-suspends-visa-issuance-and-all-air-traffic-from-china/>.
- [49] The Wall Street Journal, U.S. Imposes Entry Restrictions over Coronavirus, (2020) <https://www.wsj.com/articles/u-k-reports-first-coronavirus-cases-as-china-allies-limit-ties-11580467046>.
- [50] A.L. Phelan, R. Katz, L.O. Gostin, The novel coronavirus originating in wuhan, China, *J. Am. Med. Assoc.* (2020), <https://doi.org/10.1001/jama.2020.1097>.
- [51] BBC, Coronavirus: which countries have evacuated their citizens? <https://www.bbc.co.uk/news/world-asia-china-51312378>, (2020).
- [52] BBC, Coronavirus: More Britons Evacuated from Wuhan on French Flight, (2020) <https://www.bbc.co.uk/news/health-51345279>.
- [53] The Wall Street Journal, U.S. Plans to Evacuate More Americans by Aircraft from Wuhan, (2020) <https://www.wsj.com/articles/u-s-plans-another-wuhan-evacuation-flight-as-soon-as-next-week-11580380747>.
- [54] R. Lu, X. Zhao, J. Li, et al., Genomic characterisation and epidemiology of 2019 novel coronavirus: implications for virus origins and receptor binding, *Lancet* (2020), [https://doi.org/10.1016/S0140-6736\(20\)30251-8](https://doi.org/10.1016/S0140-6736(20)30251-8).
- [55] A.R. Fehr, S. Perlman, Coronaviruses: an Overview of Their Replication and Pathogenesis, (2015), pp. 1–23.
- [56] The Harvard Gazette, Coronavirus Cases Hit 17,400 and Are Likely to Surge, (2020) <https://news.harvard.edu/gazette/story/2020/02/as-confirmed-cases-of-coronavirus-surge-path-grows-uncertain/>.
- [57] Bloomberg Businessweek, Coronavirus Is More Dangerous for the Global Economy than SARS, (2020) <https://www.bloomberg.com/news/articles/2020-01-31/the-coronavirus-is-more-dangerous-for-the-economy-than-sars>.
- [58] Reuters, Instant View: China's Economic Growth Slows to 6.1% in 2019, Near 30-year Low, (2020) <https://www.reuters.com/article/us-china-economy-gdp-instantview/instant-view-chinas-economic-growth-slows-to-6-1-in-2019-near-30-year-low-idUSKBN1ZG092>.
- [59] TIME, As Wuhan Coronavirus Drags on Chinese Markets, the World Economy Braces for a Slowdown, (2020) <https://time.com/5775027/wuhan-coronavirus-global-economy/>.
- [60] Brookings, Global Manufacturing Scorecard: How the US Compares to 18 Other Nations, (2018) <https://www.brookings.edu/research/global-manufacturing-scorecard-how-the-us-compares-to-18-other-nations/>.
- [61] Bloomberg, China's Oil Imports Are Most World's Ever Seen and Still Growing, (2019) <https://www.bloomberg.com/news/articles/2019-12-17/china-s-oil-imports-are-most-world-s-ever-seen-and-still-growing>.
- [62] Financial Times, China's Xi Jinping knew of coronavirus earlier than first thought, 2020, <https://www.ft.com/content/3da73290-5067-11ea-8841-482eed0038b1>.